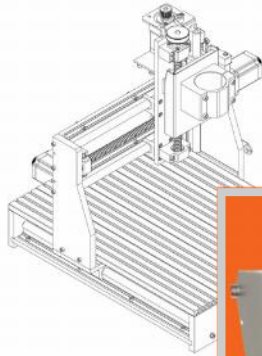




CNC Router

PRODUCT CATALOG

<http://www.cncadvanced.com>



Advanced CNC Router

CNC Router

Spare Part

Service & Maintenance

Training & Consultative

CNC ROUTER

Secondary Heading

The purpose of a catalog is to sell products or services to a targeted audience, or to advertise upcoming classes or events. Catalogs can be a great way to market your products or services, and also build your organization's identity.

Secondary Heading

First, determine the audience of the catalog. This could be anyone who might benefit from the products or services it contains. Next, establish how much time and money you can spend on your catalog. These factors will help determine the length of the catalog and how frequently you publish it. It's recommended that you publish your catalog at least quarterly so that it's considered a consistent source of information. Your customers or employees will look forward to its arrival.

Also consider how you want to print your catalog. You can print it on a desktop printer, at a copy shop, or at a commercial printing service. In addition to your budget, the complexity of the publication—including whether you print it as a black and white or a color publication—will help determine the best method for printing your publication.

Before you print your catalog, consider how you will bind your pages. The number of pages, how the reader will use it, and whether you mail it will help you determine the type of binding. For example, if you have only a few pages and your catalog is meant to be held, you might consider folding the pages and stapling the spine. Larger catalogs that are meant to be folded flat work best with a plastic binding with punched holes, while larger publications meant to be held like a book are best served by gluing the pages, or "perfect binding."



PRODUCT CATALOGUE



ACC – 3466

Price: \$00.00
Order #: 000000
Type: Type

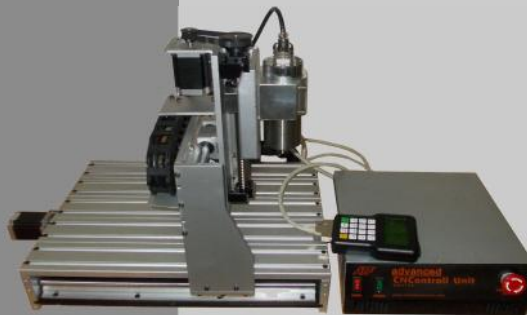
ADVANCED CNC ROUTER – ACC 3235FC

- FULL SYSTEM FOR GRAFIR 3 AXIS CNC ROUTER
- MOVEMENT 200X300X50
- SPINDLE MOTOR 300Watt AIR COOLED 24. 000rpm
- STEPPER MOTOR NEMA 23 SERIES 2 PHASE
- PRECISION BALLSCREW TRANSMISION
- FRAME ALUMUNIUUM 6061
- APLICATION; ENGRAVE FOR COMMON PCB, PVC, PMMA ENGRAVE ACURACY BETTER THAN 0. 008mm
- RESETTING ACURACY BETTER THAN 0. 03mm
- EQUIPPED PC DEKSTOP SYSTEM READY TO USE



PRODUCT CATALOGUE

Page 4



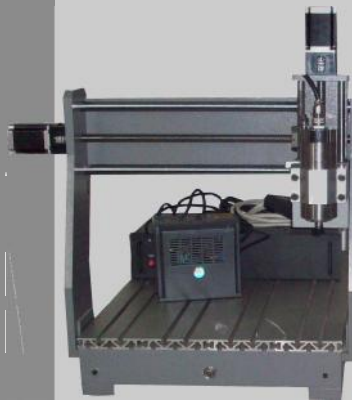
Price: \$00.00
Order #: 000000
Type: Type

ADVANCED CNC ROUTER — ACC 3466

- 3 AXIS CNC ROUTER MOVEMENT 400X600X60/ 80
- STEPPER MOTOR NEMA 23 SERIES 2 PHASE
- ENGRAVE ACURACY BETTER THAN 0.008mm
- PRECISION BALLSCREW TARNSMISION
- RESETING ACCURACY BETTER THAN 0.03mm
- TRANSMISSION SLIDING ROD CHROME COATED HARDENED
- SPINDLE MOTOR 800Wat t WATER COOLED 24. 000r pm + VFD
- ENGRAVE SPEED 300- 3000mm/ min DEPEND ON THE MATERIAL
- ER11 COLLETS,
- FRAME ALUMUNIUM 6061
- APLICATION; ENGRAVE WOOD AND COMMON PLASTIC, METAL ALLOY / ENGRAVE ON MARBLE
- EQUIPPED PC DESKTOP SYSTEM READY TO USE
- FREE TRAINING FORBASIC USED
- SHIPPING WEIGHT 60Kg
- INPUT VOLTAGE : 220- 240V/ AC
- MAX UNLOAD SPEED 5000mm/min
- SUPPORT FILE : G, tab, nc, ncc, txt

www.cncadvanced.com

PRODUCT CATALOGUE



Price: \$00.00
Order #: 000000
Type: Type

ADVANCED CNC ROUTER — ACC 3346

- 3 AXIS CNC ROUTER MOVEMENT 400X600X60/ 80
- STEPPER MOTOR NEMA 23 SERIES 2 PHASE
- PRECISION BALL SCREW TRANSMISSION
- TRANSMISSION SLIDING ROD CHROME COATED HARDENED
- SPINDLE MOTOR 800W at 1 WATER COOLED 24,000rpm + VFD
- SHIPPING WEIGHT 60Kg
- ENGRAVE ACCURACY BETTER THAN 0.008mm
- RESETTING ACCURACY BETTER THAN 0.03mm
- ENGRAVE SPEED 300- 3000mm/ min DEPEND ON THE MATERIAL
- ER11 COLLETS
- INPUT VOLTAGE : 220- 240V/ AC
- FRAME ALUMINIUM 6061
- MAX UNLOAD SPEED 5000mm/min
- SUPPORT FILE : G, tab, nc, ncc, txt
- APPLICATION; ENGRAVE WOOD AND COMMON PLASTIC, METAL ALLOY / ENGRAVE ON MARBLE
- EQUIPPED PC DESKTOP SYSTEM READY TO USE
- FREE TRAINING FOR BASIC USE

www.cncadvanced.com

CATALOGUE

Page 6



CNC KIT 4 AXIS NEMA34

- NEMA 34 1.230 oz-in torque Stepper motor for large size Router Mill
- 4 axis TB6560 stepper motor driver

Price: \$00.00
Order #: 000000
Type: Type



CNC KIT 3 AXIS NEMA23

- NEMA 23 Stepper Motor 308 oz-in (high speed Optocoupler) 3.0A board 3 axis TB6560 stepper motor driver cnc
- 3 Stepper Motor NEMA24 23HS8430

Price: \$00.00
Order #: 000000
Type: Type



DRIVER STEPPER MOTOR CW8060

CW8060 4. 5A Stepper motor driver

Price: \$00.00
Order #: 000000
Type: Type



DRIVER STEPPER MOTOR CW5045

CW 5045 4. 5A Stepper motor driver

Price: \$00.00
Order #: 000000
Type: Type

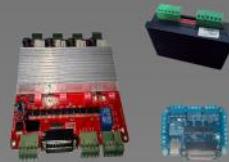
www.cncadvanced.com

CNC KIT

CONTROLLER

CATALOGUE

Page 7



DRIVER STEPPER MOTOR TB6600
TB6600 4.5A Stepper motor drive
CNC controller board V type Control Breakout 4
Axis LPT1

Price: \$00.00
Order #: 000000
Type: Type



CONTROL BREAKOUT 4AXI S
4 Axis TB6560 Stepper motor driver

Price: \$00.00
Order #: 000000
Type: Type



CONTROL BREAKOUT 5AXIS
5 axis CNC Breakout board interfacance
adapter board Breakout 5 Axis LPT1

Price: \$00.00
Order #: 000000
Type: Type



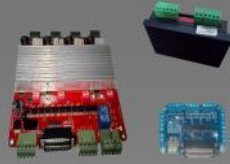
CONTROL BREAKOUT 4AXIS
4 axis USB CNC Controller USB CNC
driver board with handle Control
Breakout 4 axis USB

Price: \$00.00
Order #: 000000
Type: Type

www.cncadvanced.com

CONTROLLER

CATALOGUE



Page 8

DSP HANDHELD CONTROL



- DSP HandHeld Control
- Software intergrate
- Display LCD 128 x 64
- USB terminal and U Disk
- Display G code, PLT files
- Operating temperatur 0 - 70 degree
- Outside Voltage 5 Volt
- Power 2 Watt
- File Memory 128 Mb

Price: \$00.00

Order #: 000000

Type: Type

POWER SUPPLY



- Power Supply 350 W 24 V
- Power Supply 350 W 70 V
- Power Supply 350 W 60 V

Price: \$00.00

Order #: 000000

Type: Type

ELECTRICAL CONTROLLER

www.cncadvanced.com

CATALOGUE

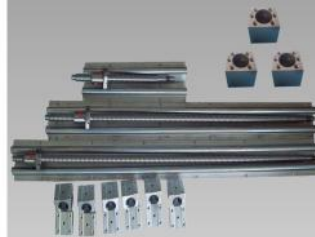
Page 9



Linear System 345

- RM1605 - L 300mm
- RM1605 - L 400mm
- RM1605 - L 500mm
- BSF 1605 - 3 ball nut
- SBR16 UU (6pcs)
- SBR16 - L 300mm (2pcs)
- SBR16 - L 400mm (2pcs)
- SBR16 - L 500mm (2pcs)

Price: \$00.00
Order #: 000000
Type: Type



Linear System 389

- RM1605 - L 300mm
- RM1605 - L 800mm
- RM1605 - L 900mm
- BSF 1605 - 3 ball nut
- SBR16 UU (6pcs)
- SBR16 - L 300mm (2pcs)
- SBR16 - L 800mm (2pcs)
- SBR16 - L 900mm (2pcs)

Price: \$00.00
Order #: 000000
Type: Type



Linear System 345

- RM1605 - L 300mm
- RM1605 - L 400mm
- RM1605 - L 500mm
- BSF 1605 - 3 ball nut
- BR25- 30- 6. 35* 10 coupler
- BK12 fixed end (3pcs)
- BF12 free end (3pcs)
- SBR16 UU (12pcs)
- SBR16 - L 300mm (2pcs)
- SBR16 - L 400mm (2pcs)

Price: \$00.00
Order #: 000000
Type: Type



Linear System 389

- RM1605 - L 300mm
- RM1605 - L 800mm
- RM1605 - L 900mm
- BSF 1605 - 3 ball nut
- BR25- 30- 6. 35* 10 coupler
- BK12 fixed end
- BF12 free end
- SBR16 UU (12pcs)
- SBR16 - L 300mm (2pcs)
- SBR16 - L 800mm (2pcs)

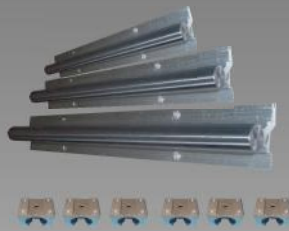
Price: \$00.00
Order #: 000000
Type: Type

LINEAR SYSTEM

www.cncadvanced.com

CATALOGUE

Page 10



Linear Guide SBR16- 345

- Linear Guide Rod SBR L = 300
- Linear Guide Rod SBR L = 400
- Linear Guide Rod SBR L = 500
- SBR16UU (6 pcs)

Price: \$00.00
Order #: 000000
Type: Type



Linear Guide SBR16- 389

- Linear Guide Rod SBR L = 300
- Linear Guide Rod SBR L = 800
- Linear Guide Rod SBR L = 900
- SBR16UU (6 pcs)

Price: \$00.00
Order #: 000000
Type: Type



Ball screw RM1605- 345

- Ball screw RM 1605 L = 300
- Ball screw RM 1605 L = 400
- Ball screw RM 1605 L = 500
- BSF 1605 - 3bal l nut (3 pcs)

Price: \$00.00
Order #: 000000
Type: Type



Ball screw RM1605- 389

- Ball screw RM 1605 L = 300
- Ball screw RM 1605 L = 800
- Ball screw RM 1605 L = 900
- BSF 1605 - 3bal l nut (3 pcs)

Price: \$00.00
Order #: 000000
Type: Type

LINEAR GUIDE

www.cncadvanced.com



Spindle 800 Watt Air - Cooled

- 0.8 KW Air - Cooled spindle motor + inverter

Price: \$00.00
Order #: 000000
Type: Type



Spindle 300 Watt DC Air - Cooled

- DC spindle 300W 11000rpm + controller

Price: \$00.00
Order #: 000000
Type: Type



Spindle 1.5 KW Watercooled

- 1.5 KW Watercooled spindle motor + inverter

Price: \$00.00
Order #: 000000
Type: Type

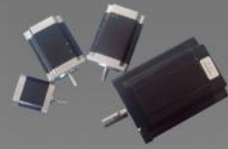


Spindle 800 Watt Watercooled

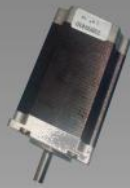
- 0.8 KW Watercooled spindle motor + inverter

Price: \$00.00

CATALOGUE



Page 12



Stepper Motor NEMA 23

- Stepper Motor NEMA 23 23HS9430 3A

Price: \$00.00
Order #: 000000
Type: Type



Stepper Motor NEMA 34

- Stepper Motor NEMA 34 34HS4802 3A

Price: \$00.00
Order #: 000000
Type: Type



Stepper Motor NEMA 17

- Stepper Motor NEMA 17 17HS8401 1.8A

Price: \$00.00
Order #: 000000
Type: Type



Stepper Motor NEMA 23

- Stepper Motor NEMA 23 23HS8430 3A

Price: \$00.00
Order #: 000000
Type: Type

www.cncadvanced.com

STEPPER

CATALOGUE



Page 13

Endmill Cutter 6x6

- Endmill cutter diameter 6mm and 6mm shank



Price: \$00.00
Order #: 000000
Type: Type

Endmill Cutter 3x6

- Endmill cutter diameter 3mm and 6mm shank



Price: \$00.00
Order #: 000000
Type: Type

Endmill Cutter 1x6

- Endmill cutter diameter 1mm and 6mm shank



Price: \$00.00
Order #: 000000
Type: Type

CUTTER



Ballmill Cutter R 0.5x6

- Ballmill cutter R05/6
Diameter 1mm/ Radius 0.5 and 6mm shank

Price: \$00.00
Order #: 000000
Type: Type



Ballmill Cutter R 1.5x6

- Ballmill cutter R1.5/6
Diameter 3mm/ Radius 1.5 and 6mm shank

Price: \$00.00
Order #: 000000
Type: Type



Ballmill Cutter R 3x6

- Ballmill cutter R3/6
Diameter 6mm/ Radius 3 and 6mm shank

Price: \$00.00
Order #: 000000
Type: Type



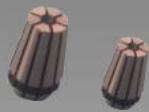
Engraver Cutter 0.2x3

- Cutter Engraver 0.2*60deg (3.17 shank)

Price: \$00.00
Order #: 000000
Type: Type

CATALOGUE

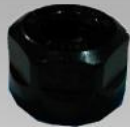
Page 15



Collet ER11

- Collet ER11 diameter 3mm
- Collet ER11 diameter 6mm

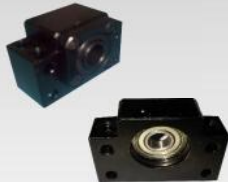
Price: \$00.00
Order #: 000000
Type: Type



NUT Clamping ER11

- NUT Clamping ER 11

Price: \$00.00
Order #: 000000
Type: Type



End Support

- BK 12 fixed end
- BF 12 free end

Price: \$00.00
Order #: 000000
Type: Type



Linear Block

- SBR16UU

Price: \$00.00
Order #: 000000
Type: Type

www.cncadvanced.com

TOOLS

CATALOGUE

Page 16



Coupling

- BR25-30-6.35*10 - 8 Coupler
- BR25-30-6.35*10 - 10 Coupler

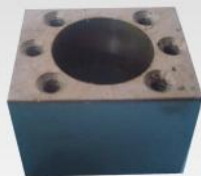
Price: \$00.00
Order #: 000000
Type: Type



Resiliert Coupling

- 34-L27-8-8 Coupler

Price: \$00.00
Order #: 000000
Type: Type



Ballnut Housing

- BSF 1605

Price: \$00.00
Order #: 000000
Type: Type

TOOLS